

**4.1.1. The institution has adequate facilities for teaching - learning. viz., classrooms, laboratories, computing equipment etc**

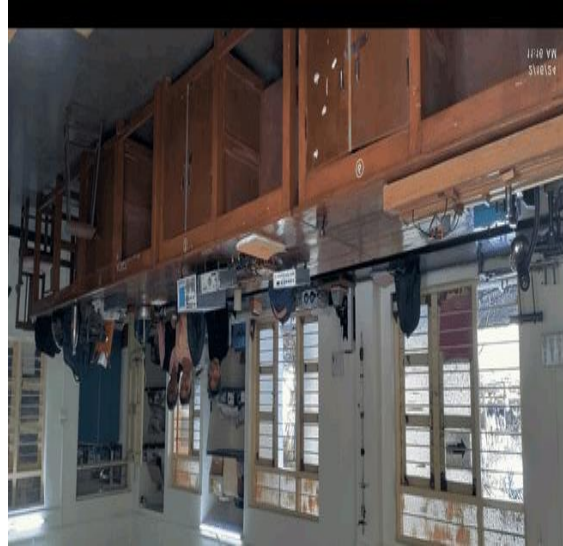
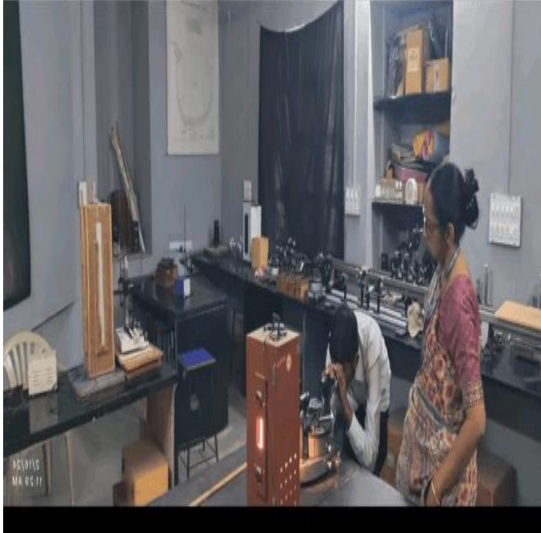
INDEX

| No | Content                 | Page No. |
|----|-------------------------|----------|
| 1  | ICT Room 4&7            | 2        |
| 2  | Physics Laboratory      | 3        |
| 3  | Geography Laboratory    | 4        |
| 4  | Chemistry Laboratory    | 5        |
| 5  | Zoology Laboratory      | 7        |
| 6  | Zoology M.Sc Laboratory | 8        |
| 7. | Botony Laboratory       | 11       |
| 8  | Ladies Hostel           | 14       |
| 9  | College Canteen         | 19       |
| 10 | E-facility Center       | 20       |
| 11 | Kaladalan               | 21       |

## ICT Class Room No. 4 and 7



# Physics Lab



**Department of Geography**



## Department of Chemistry





Department of Zoology



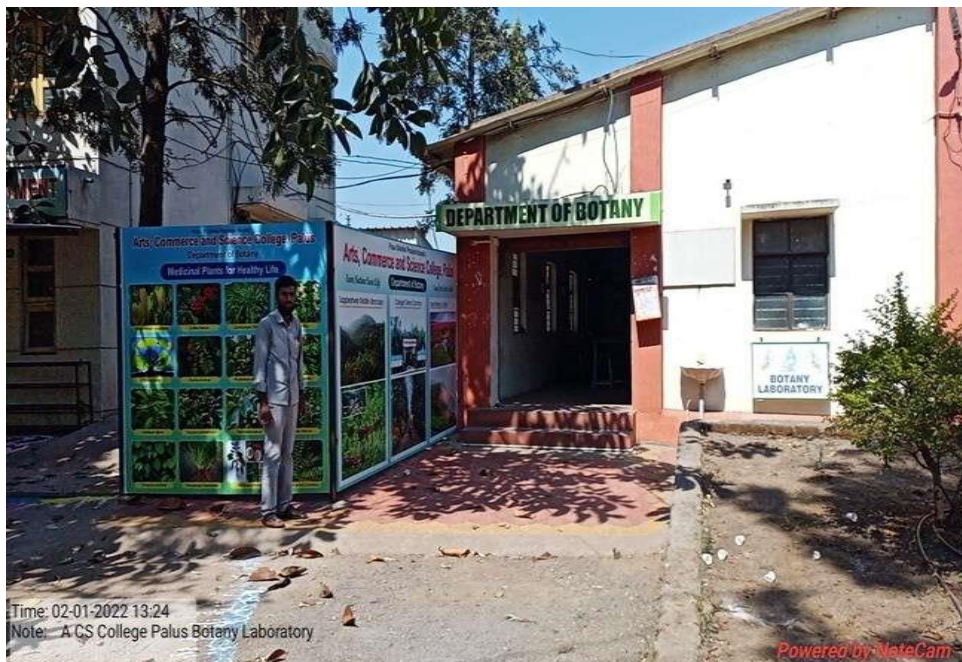








## Department of Botany



## Department of Botany



## Department of Botany



## Ladies Hostel



## Ladies Hostel

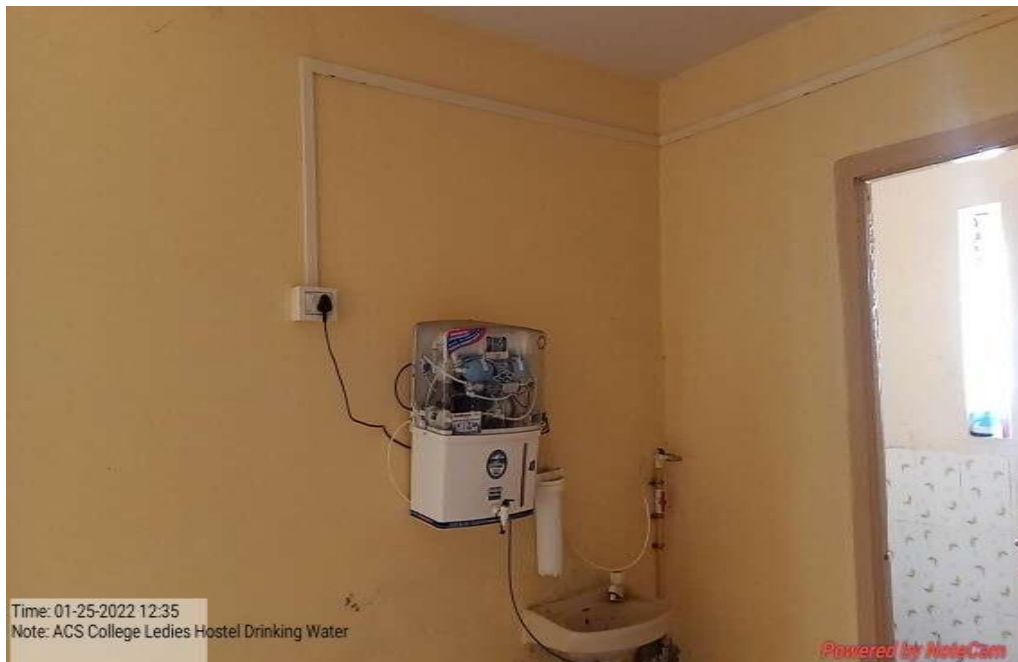


## Ladies Hostel





## Ladies Hostel



## College Canteen



# College Canteen



## Student E-Facilitation Center



(Kaladalan)

